

Thank You.

We get new customers because one lobsterman sees that another lobsterman using our products is doing better. I think lobstermen must have an above-average intelligence, in addition to physical stamina, to survive in their chosen line of work. They encounter a unique set of problems in their business. They have to keep a boat afloat and running under conditions that are often dangerous; they have to keep their gear maintained; they have to know where the lobsters are; and they have to be good businessmen to buy what they need and sell what they catch at the right prices. I see that some people trying to sell to lobstermen underestimate them. They think that flashy advertising and token give-always will sell their product. I don't think so, at least not in the long run. In the end, it's quality that counts. At Riverdale Mills we do everything we can to provide the highest quality product available so the plastic coated wire mesh we supply to lobstermen will be as trouble-free as possible, and outlast all others.

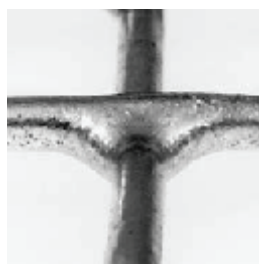
James M. Knott, Sr.,
President, Riverdale Mills Corp.
and fellow lobsterman

We at Riverdale Mills would like to take this opportunity to thank all of our loyal customers who have supported us over the years.

Without you, the marine industry would never have been revolutionized by one of the finest fishing inventions of our time: the wire mesh lobster trap.



Other traps are zinc galvanized before welding (GBW) - the weld has no zinc, causing premature rusting in seawater



Aquamesh is zinc galvanized after welding (GAW) - the weld is completely protected from the harsh elements

The wire mesh lobster trap was invented by James M. Knott, Sr. in 1957. Frankly, lobstermen were dubious. But when they started fishing the traps, the word of mouth landslide began. No amount of advertising could convince lobstermen to fish the traps, but other lobstermen —

and their impressive catches in traps with amazing longevity — could, and did.

It took nearly 20 years for the wire mesh lobster trap to be widely accepted by lobstermen. Now, the wire mesh lobster trap is not only



recognized as far superior to the wooden trap, but is considered the standard lobstering device in the industry.

We would like to renew our commitment to you, the lobstermen, who have aided us in successfully educating the marine industry about the superiority of the wire mesh lobster trap. We can assure you that we will continue to

manufacture the highest quality lobster wire, while also striving to provide beneficial innovations in the future.

Thank you, friends. And best of luck to you in the races this year!

Aquamesh®
Ocean Tough.

RIVERDALE

130 Riverdale Street • P.O. Box 200 • Northbridge, MA 01534

800-762-6374 • www.riverdale.com